

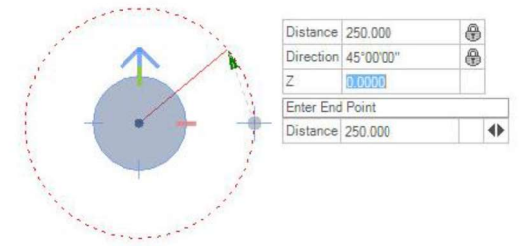
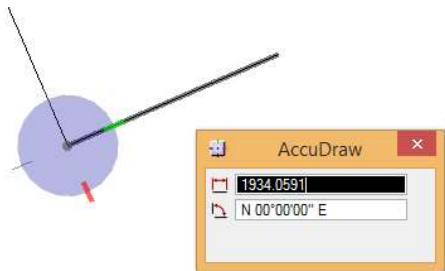


Civil AccuDraw, MicroStation AccuDraw, or Both?

Why You Need Civil Accudraw

Bentley[®]
Advancing Infrastructure

© 2018 Bentley Systems, Incorporated



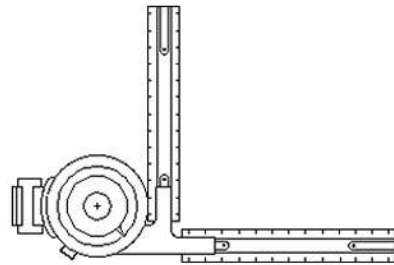
Mastering a tool such as AccuDraw allows you to produce precision drawings faster and more accurate than many other methods.

Civil AccuDraw, builds upon the solid foundation of AccuDraw combining it with civil specific tools enabling it be more useful to the civil designer than standard AccuDraw alone.

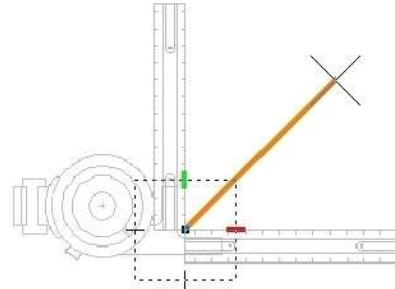
Become more productive knowing where and when AccuDraw and Civil AccuDraw are used.

MicroStation AccuDraw

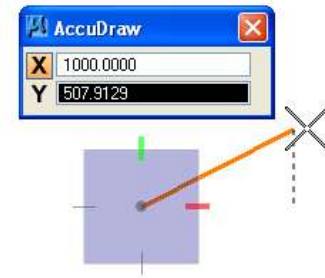
- Productivity Related MicroStation Tool
- Allows For Precision Input Or Visual Feedback
- Intuitive and extremely user-friendly



Traditional Drafting Machine

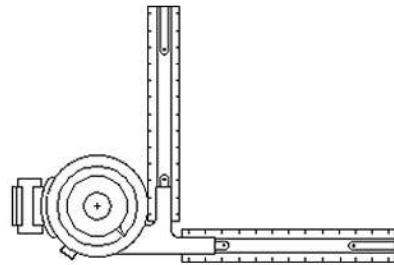


AccuDraw Superimposed on a Drafting Machine

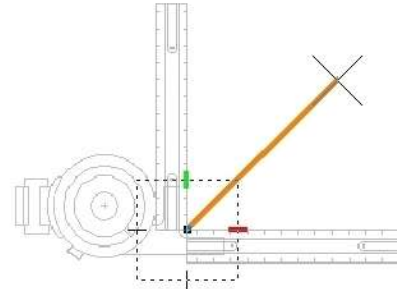


MicroStation AccuDraw

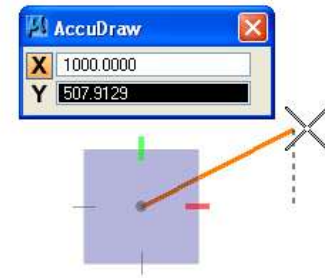
- Lets you enter in distance information accurately
- Works with all tools for precision input
- Uses shortcuts to help you draw precisely
- Rectangular and Polar modes
- Pop-up Calculator



Traditional Drafting Machine

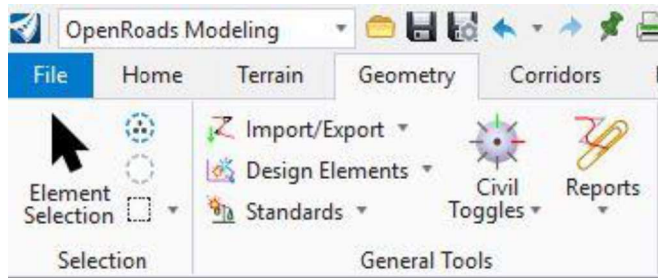


AccuDraw Superimposed on a Drafting Machine



Activating the Civil AccuDraw toolbar

OpenRoads Modeling : Geometry : General Tools



The Civil AccuDraw toolbar

- Can be docked
- Provides access to all Civil AccuDraw functions.
- Changes based on the focused view.

2D Plan



Profile Model View

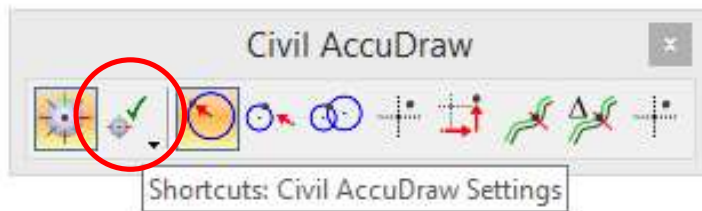


3D Plan



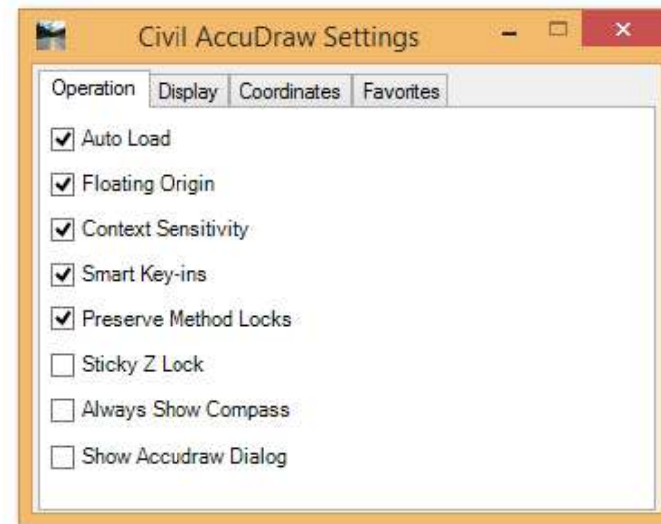
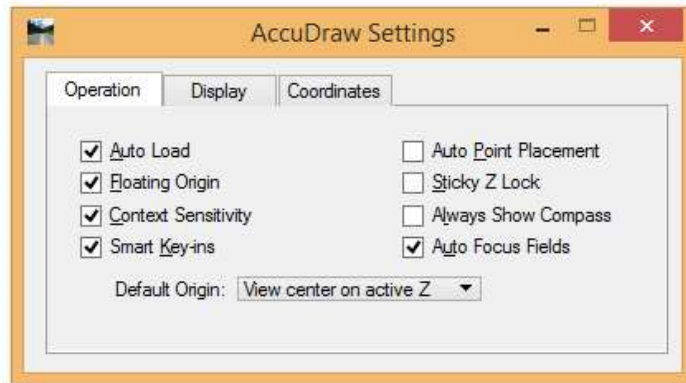
Settings

Civil AccuDraw toolbar



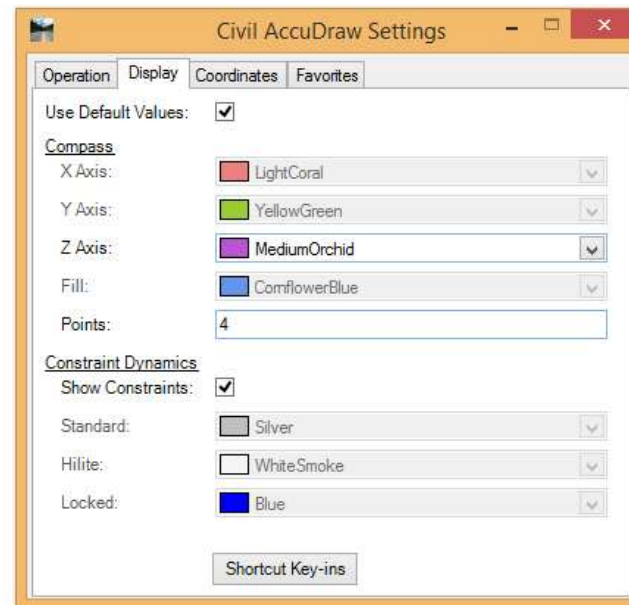
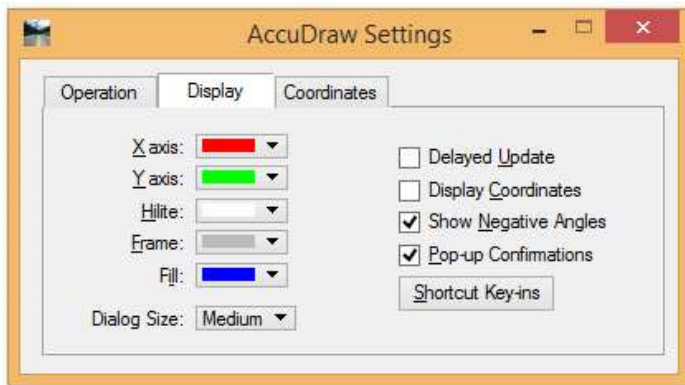
Settings are similar to MicroStation AccuDraw

Operation Tab

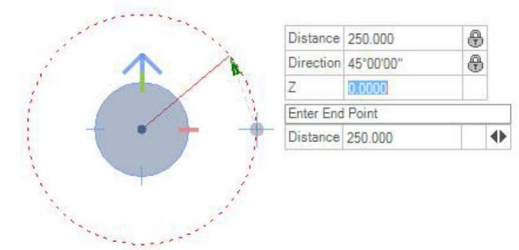


Settings are similar to MicroStation AccuDraw

Display Tab

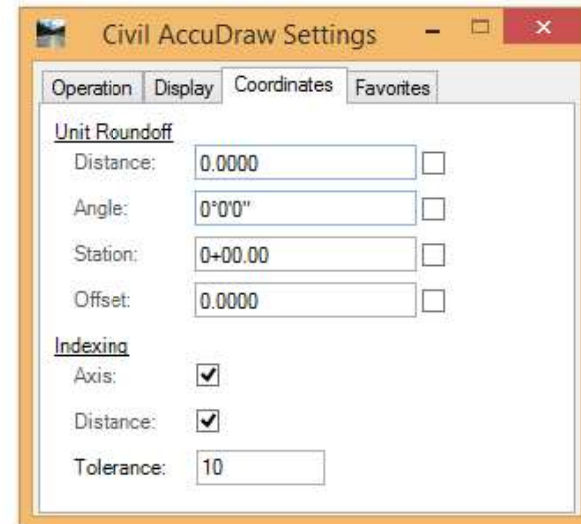
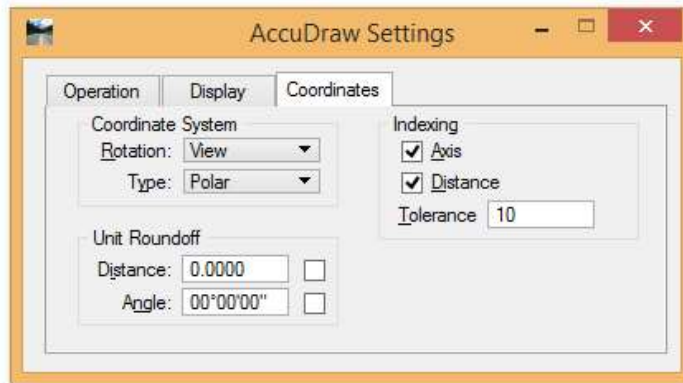


These settings control the heads-up dynamics.



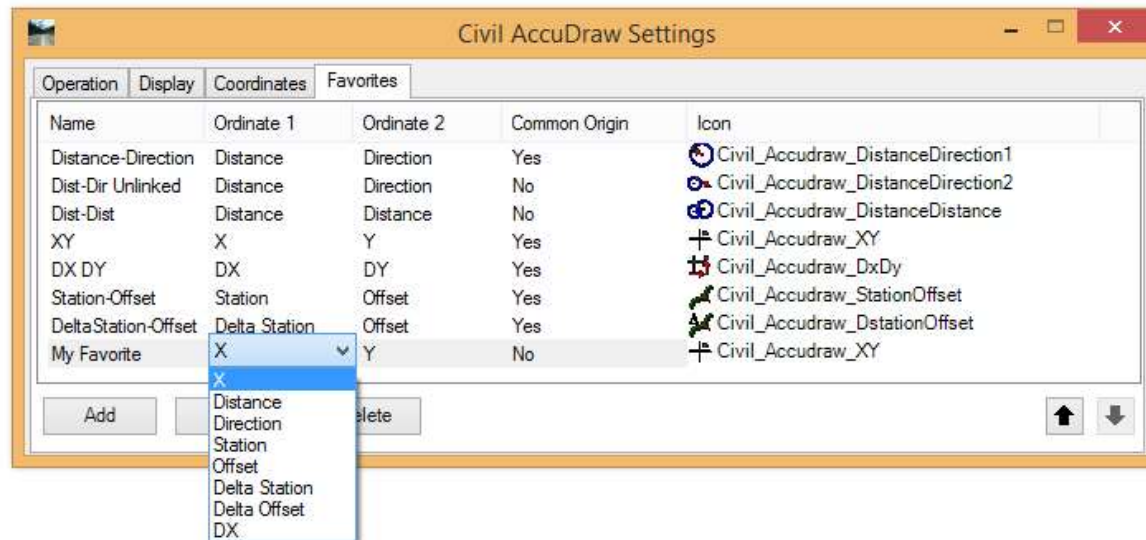
Settings are similar to MicroStation AccuDraw

Coordinates Tab

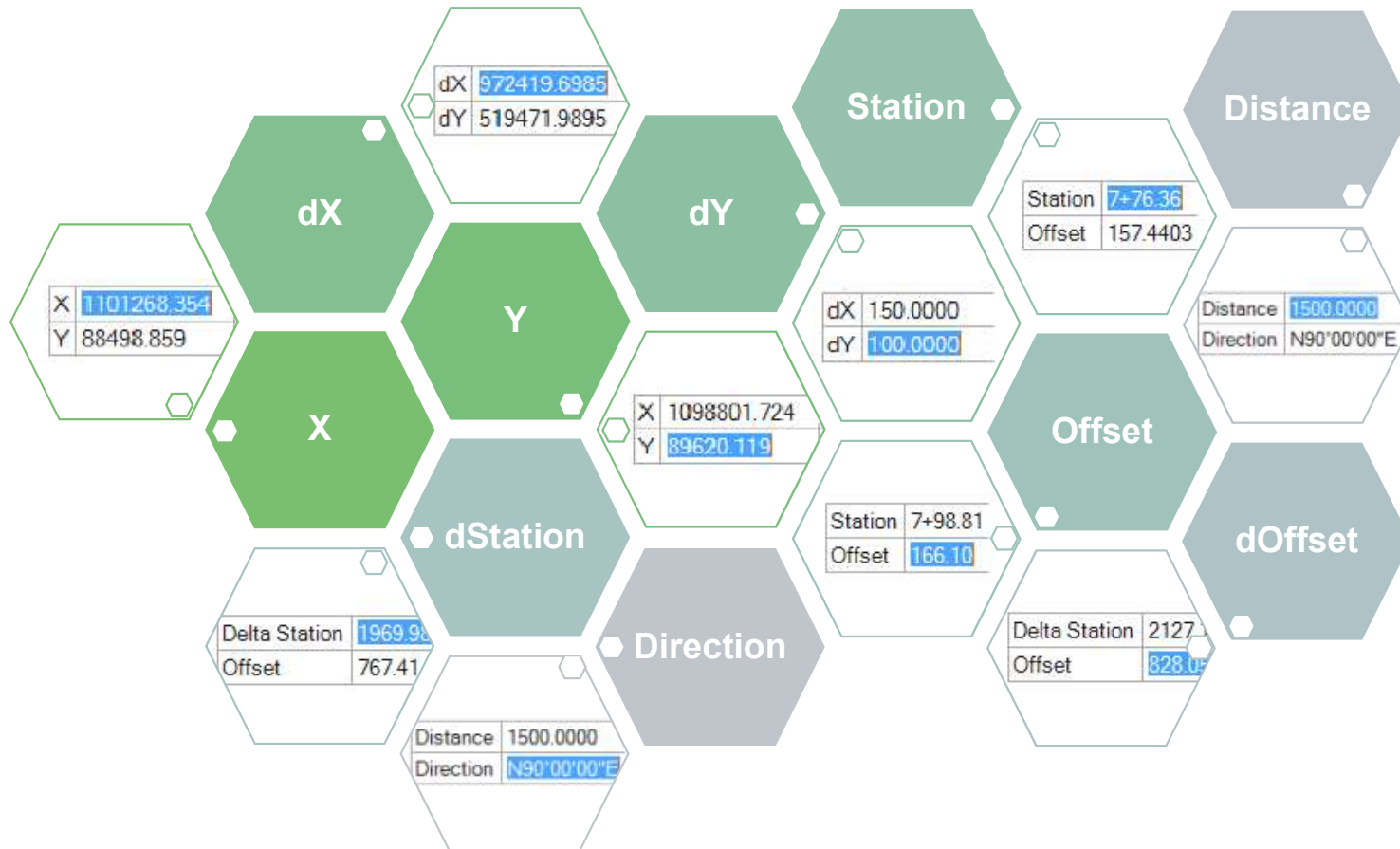


Favorites (Civil AccuDraw only)

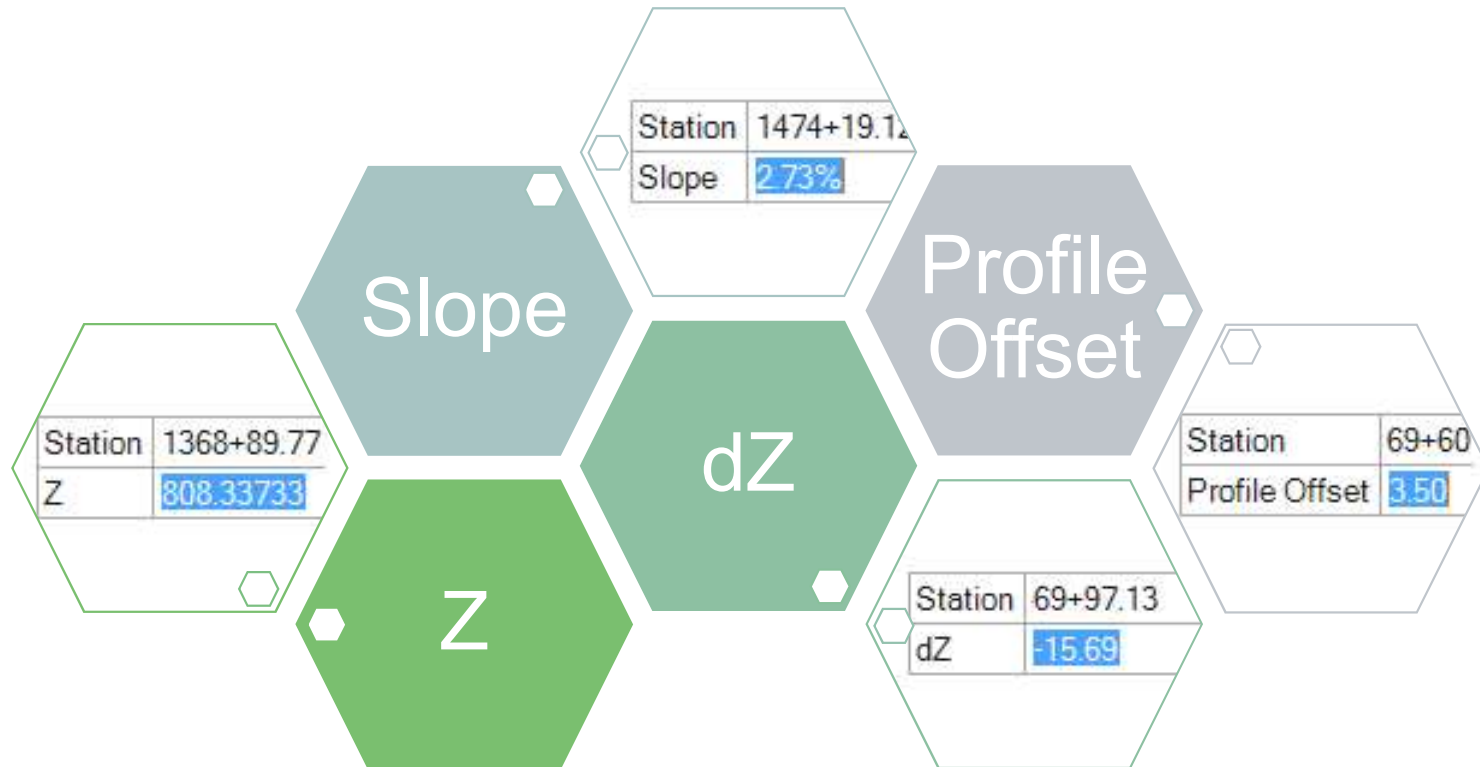
Support user-customized methods.



Horizontal Methods



Vertical Methods



Why You Need Civil AccuDraw ...

Communicates Precision Input

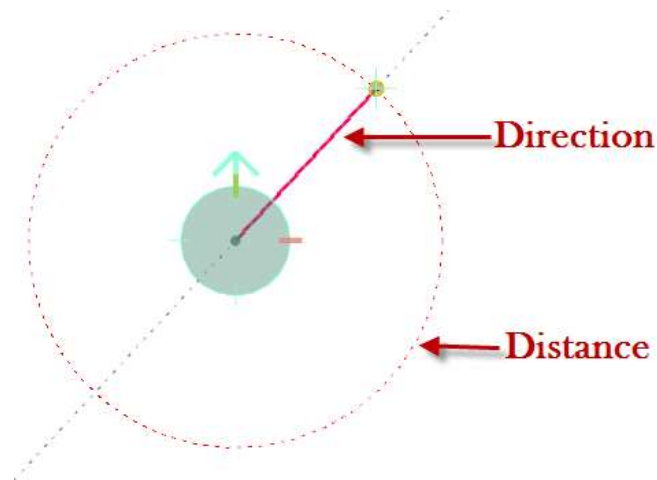
- Provides point input (e.g. coordinates, distance, direction, station, offset, etc.) to any MicroStation or Civil command or construction which requires a point.
 - Note: Civil AccuDraw is not limited to only civil commands. It can also be used with MicroStation commands.

Communicates Design Intent

- Civil commands can persist the Civil AccuDraw input as rules on the points.

Precision Input: Distance Direction

- Specify Distance Direction Of Element
- “Unlinked” Allows setting Distance From One Origin, And Direction From Another Origin

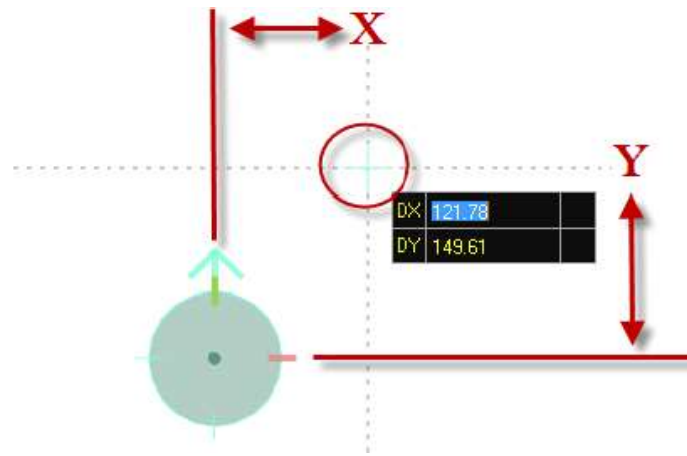


Precision Input: XY

- X: Absolute value of X coordinate
- Y: Absolute value of Y coordinate

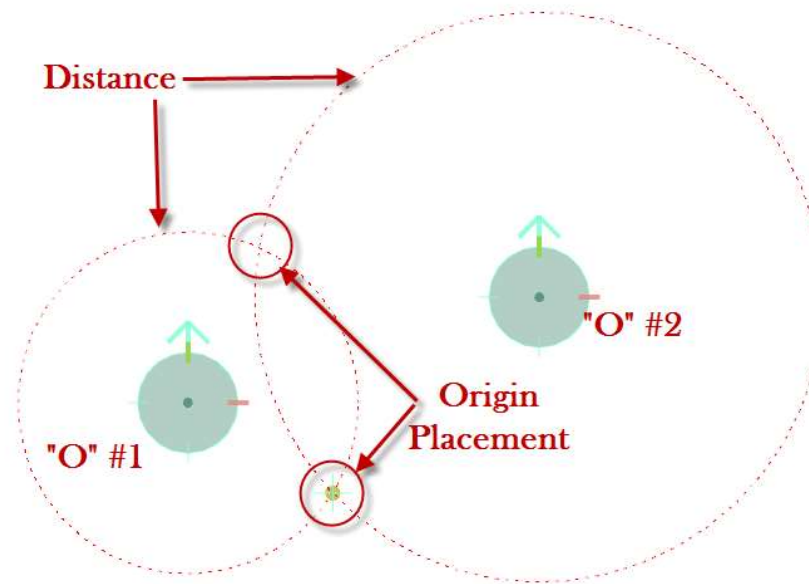
Precision Input: DX DY

- Distance offset From X
- Distance Offset From Y



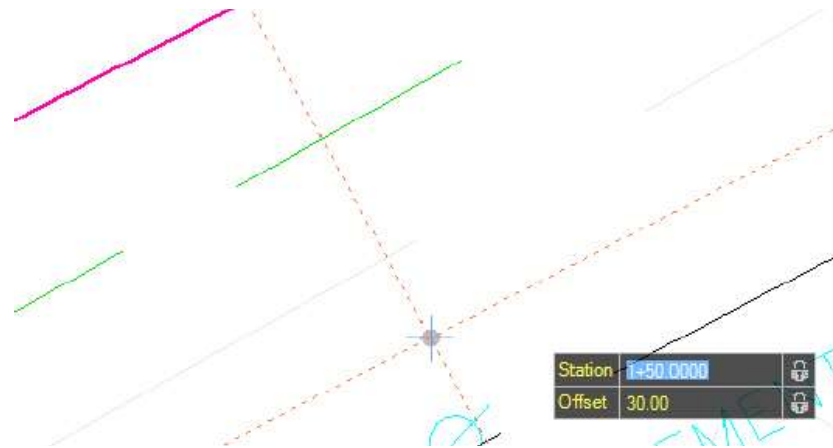
Precision Input: Distance Distance

- Places New Origin From Two Known Points



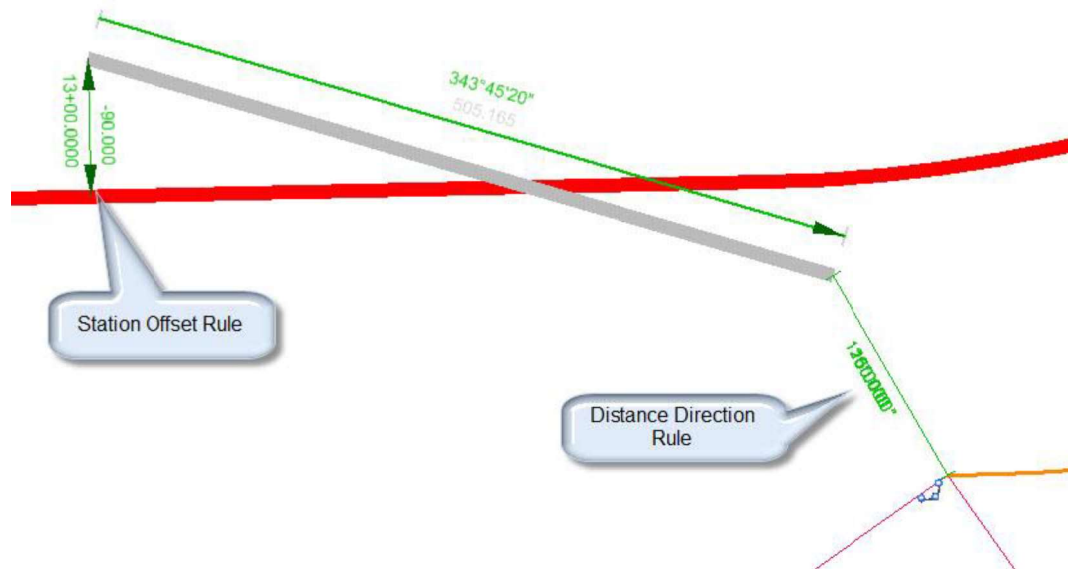
Precision Input: Station Offset

- Locates Origin At A Specified Station And Offset From An Element
 - Will Allow For Reading Of CP Element Stationing
- As With All Ordinances Works With Most Microstation Tools
 - Place Cell
 - Linear Tools
 - Text
 - Modify



Communicates Design Intent

However, there are times that, in order to communicate your design intent, you need more than just a simple MicroStation snap. In these scenarios, Civil AccuDraw becomes an indispensable tool, because the parameters you use with Civil AccuDraw are persisted as part of the rules.



Communicates Design Intent

An example from Horizontal geometry.

- ***Tying the Turn Lane to the Crosswalk***



File Home Terrain Geometry Corridors Model Detailing Drawing Production Drawing View

Attributes: None, Default, 0, 0, 0, 0, 0, 0

Primary: Explorer, Attach Tools, Models, Level Display

Selection: Element Selection

Placement: Line Tools, Arc Tools, Ellipse Tools

Manipulate: Move, Copy, Rotate

Modify: Modify Element, Break Element, Trim Multiple

Measure: Measure Distance, Measure Radius, Measure Angle

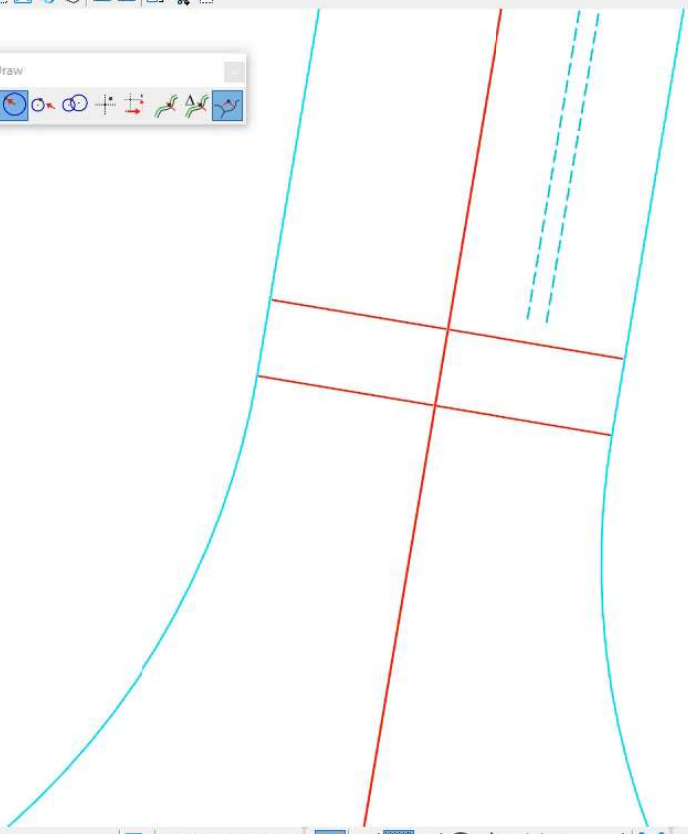
Drawing Scales: 1:500, ACS Plane Lock, Annotation Scale Lock

No Feature Definition

View 1, Default

Civil AccuDraw

Element Selection



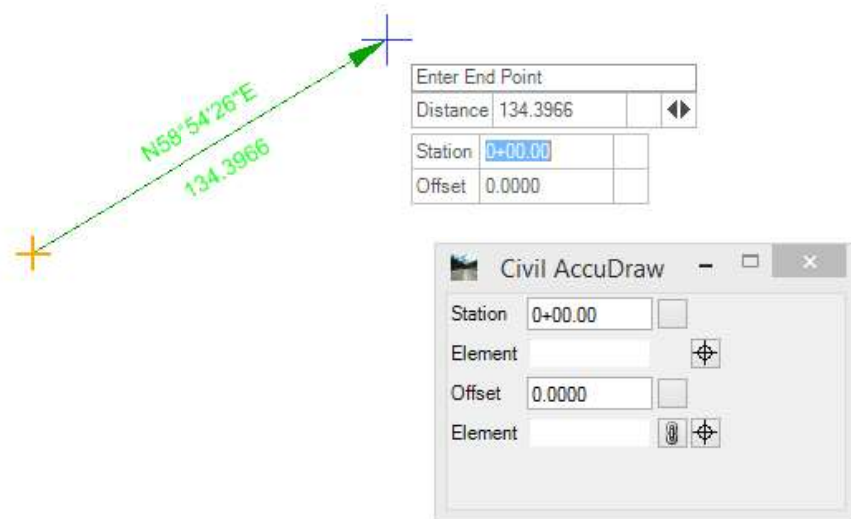
Multi-Model Views 1 2 3 4 5 6 7 8

Element Selection > Identify element to add to set

Default

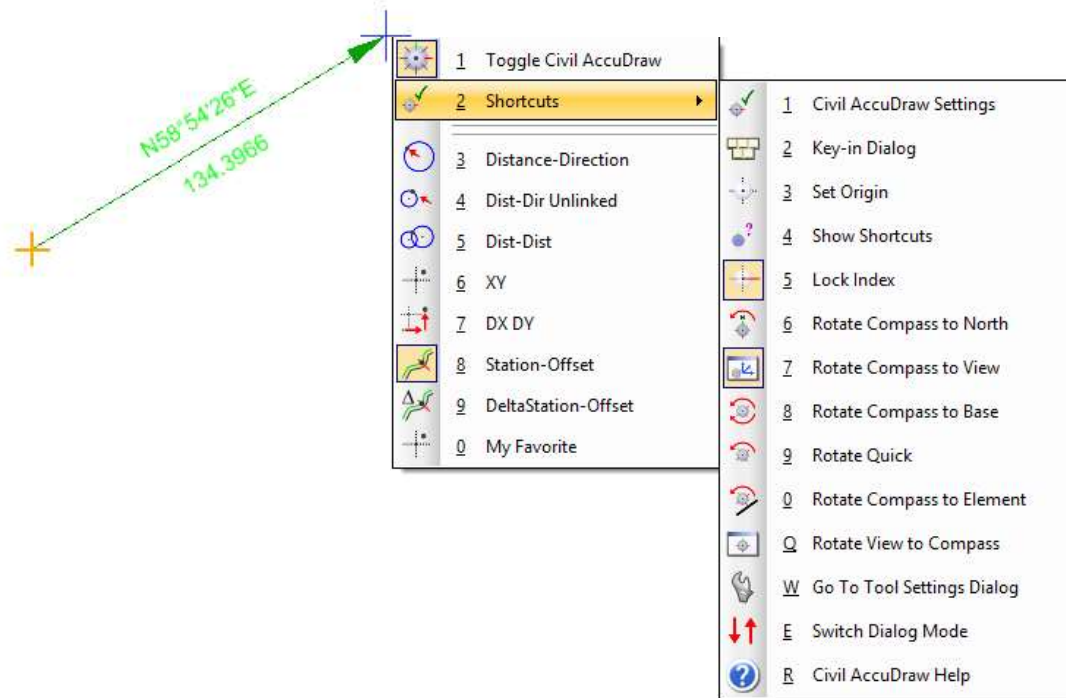
Tips and Tricks

The cursor prompt dialog can be changed to a fixed box dialog by pressing the down arrow on keyboard.



Tips and Tricks

Pressing the space bar on your keyboard opens a direct pick menu.



Help!

All settings are detailed in the OpenRoads Help.

